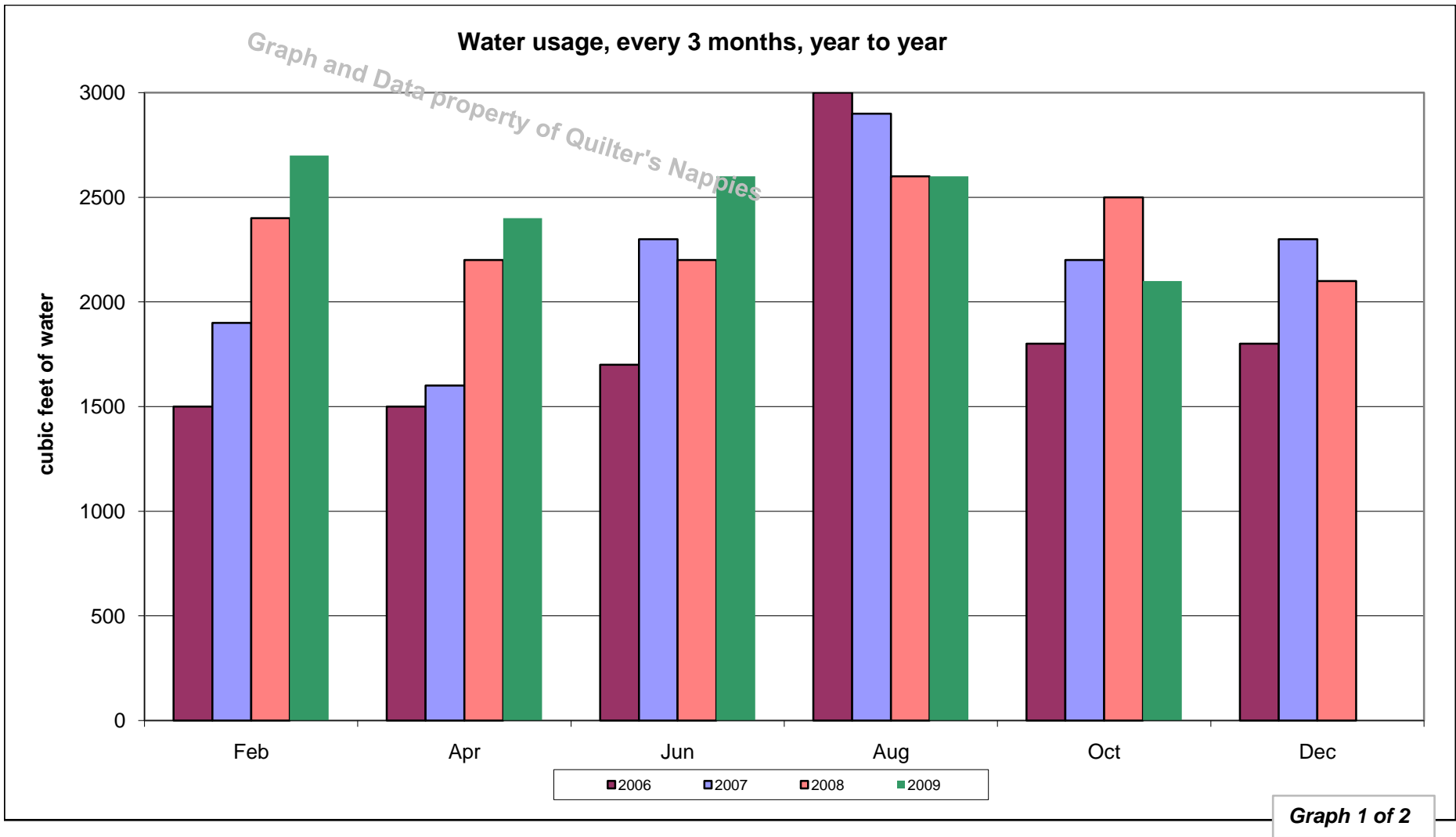


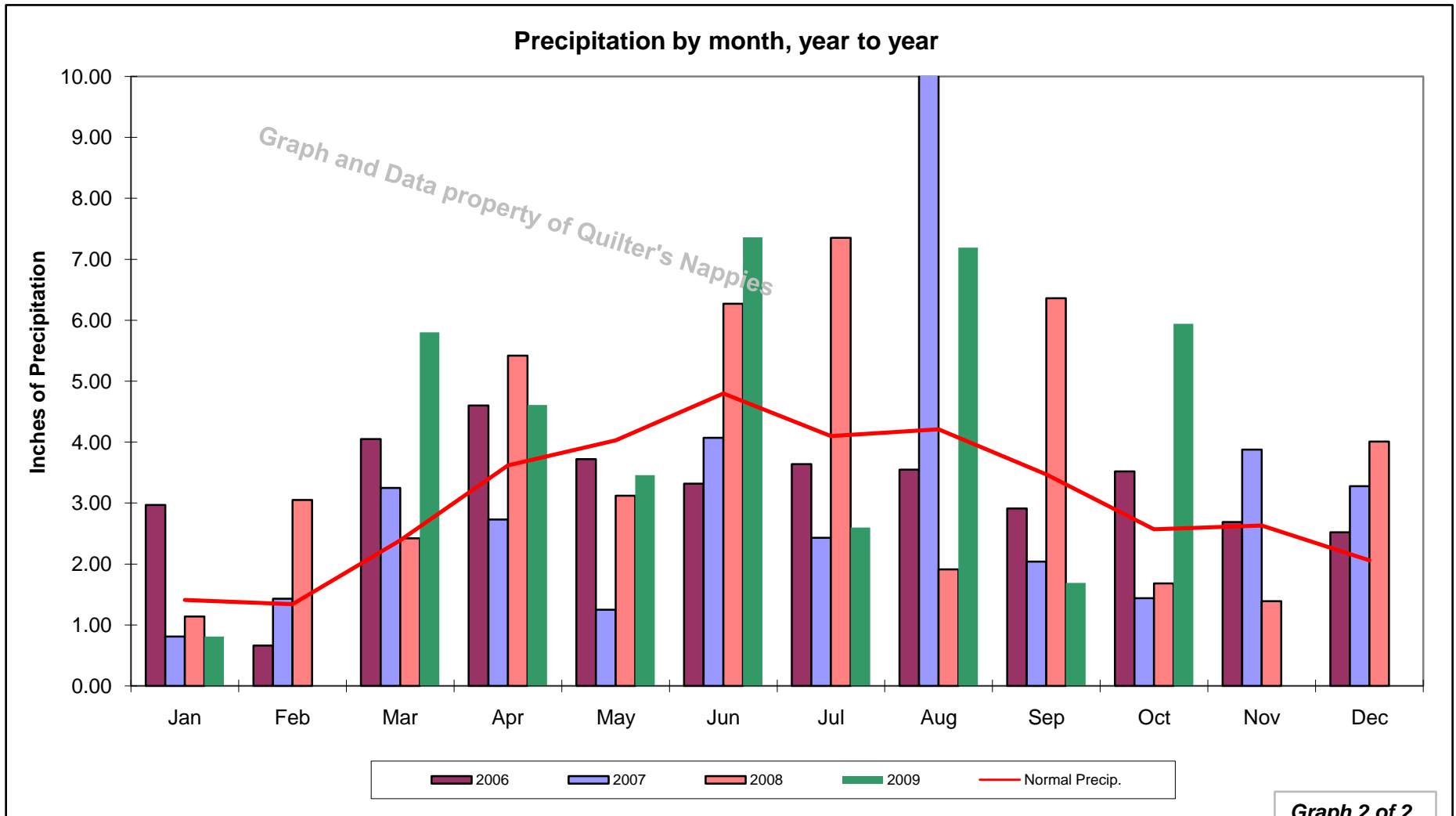
Graph and Data property of Quilter's Nappies

### Water usage, every 3 months, year to year



Graph 1 of 2

*This chart shows actual water usage for: watering flowers & garden, showers/baths, washing dishes, washing clothes (+diapers & fabric for wipes)*



*This chart shows actual precipitation (rain & snow) as reported by the National Weather Service (NWS). The "Normal Precipitation" line on the chart is the monthly average precipitation as reported by the NWS*

*In the months where the actual precipitation was low, especially in 2006 and 2007, a fair amount of water was used for watering the flowers and vegetable garden (we very rarely water the grass!)*